



TEL: (517) 546-3220

# PARTS CATALOG AND REPAIR MANUAL

Select One 

**SAFETY BRIDGE CRANES  
AND TROLLEYS**

**ETA-4 & ETA-8**

## PARTS AND REPAIR MANUAL

This manual has been compiled to expedite the ordering of repair parts for Unified Industries' products, as well as to present to maintenance personnel the correct method of servicing the product.

In order to show all component details of Unified Industries' products, an exploded view has been shown for each model. Further technical information is available in our current full line product catalog.

### INSTRUCTIONS FOR ORDERING

Locate the model required in the index and turn to the page number indicated for the exploded view.

Each serviceable part or sub-assembly in the exploded view is identified by a reference number. Use the reference number to locate the necessary part information in the parts list on the opposite page.

Any parts listed without a reference number in the parts list are not sold separately, but are included in the sub-assembly above it as shown in the exploded view. Each item listed as a sub-assembly will be sold complete including all of its component parts listed directly below it.

The parts list quantity column gives the required amount of each component part for each complete assembly.

Specify which model each part is being ordered for to ensure that the correct part is shipped.

Always use the complete stock code number and part description for each part being ordered.

Specify the quantity needed for each part being ordered.

Mail your order to: Unified Industries, Inc.  
1033 Sutton St.  
Howell, MI 48843

or call our Sales Engineer at: (517) 546-3220

## **GENERAL OPERATION AND MAINTENANCE INSTRUCTIONS**

A physical inspection of all Unified Industries' products is required at least every six months. Visually inspect all parts, moving as well as non-moving, for cracks, excessive wear, or other damage. Particular attention should be given to the following parts: load wheels (outer surface and bearings), side guide rollers, kick-up wheels, safety straps, attachment mechanisms or bolts, and all contact surfaces. Should cracks, excessive wear, or other damage be present, replace the part.

All trollies must move freely without restriction during operation. Should any restriction be present, an inspection and correction of the problem should be made.

Rail and bridge girder running surfaces must be clean and in good condition to allow the trollies to move freely.

Runway surfaces must be parallel and level to provide proper alignment for the bridge crane end trucks.

End stops on all bridge cranes, telescoping beams, or rails must be securely fastened with Grade 5 bolts, slotted nuts, and cotter pins. End stop bolts must be mounted with bolt head on rail surface, threads down, through the rail and end stop, as shown in exploded views of bridge cranes and telescopes.

Never operate bridge cranes without end truck trollies properly and securely fastened.

Do not load any bridge crane and/or trolley beyond its rated capacity as so labeled.

Safety straps are provided on trollies without built-in safety lugs in the casting. Any safety items such as safety straps, chains, etc. — provided with Unified Industries' trollies — must remain in place to provide added safety protection for the operator.

Any trolley model designed with special sliding or articulating action must be correctly mounted to allow the movement required.

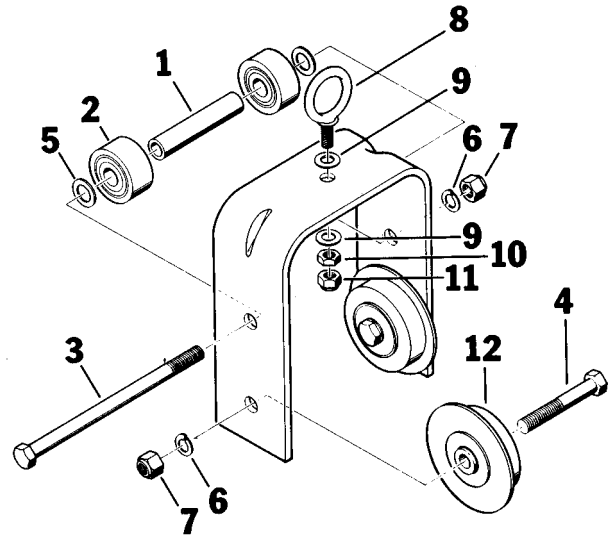
Any conveyor type load wheels with grease fittings on the axle should be inspected and properly greased, using a silicone free molysulfide grease, approximately every six months depending on work load and use.

## TABLE OF CONTENTS

MODEL	PAGE
FT-225, FT-325-B, FT-333, FT-333-B .....	2
FT-233, FT-233-B, FT-266, FT-266-B .....	2
MT-250-B .....	3
MBC-500-2, MBC-500-2-4 .....	4
MBC-500-3, MBC-500-3-4 .....	5
AC-500-2, AC-500-2-4 .....	6
SAC-500-2, SAC-500-2-4 .....	7
UT-500-LL, UT-500-S .....	8
TA-325, TA-4, TA-6 .....	9
UT-1000-S, UT-1000-LL .....	10
UT-1000-YBC .....	11
MBC-1000-2 .....	12
MBC-1000-3 .....	13
AC-1027 .....	14
SAC-1020 .....	15
BT-325, BT-266, BT-333 .....	16
BT-325-DHS, BT-266-DHS, BT-333-DHS .....	16
T-612 .....	17
T-325, T-904, T-906 .....	18
T-325-LL, T-904-LL, T-906-LL .....	18
TS-325, TS-904, TS-906 .....	18
TSE-1017 .....	19
MBC-2500 .....	20
TT-1023 .....	21
TT-1023-HT .....	22
BT-325-10, BT-333-10 .....	23
BT-325-10R, BT-333-10R .....	23
BT-325-10-DHS, BT-333-10-DHS .....	23
BT-325-10R-DHS, BT-333-10R-DHS .....	23
Universal Swivel S-300 .....	24
5060-1 Indexing Turn Stile .....	25
Optional Wheel Assemblies .....	26 - 28

**FT-325, FT-325-B (BUMPER)**  
**FT-333, FT-333-B (BUMPER)**

REF.	STOCK CODE	DESCRIPTION	QUANTITY
1	55730	Ft. Spacer	1
2	56170	3021 1.25" Guide Roller	2
3	50600	3/8" Hex Bolt	1
4	50510	3/8" Hex Bolt	2
5	53040	3/8" Washer	2
6	53200	3/8" Lockwasher	3
7	52080	3/8" Nylon Locknut	3
8	50020	5/16" Eyebolt	1
9	53030	5/16" Washer	2
10	52040	5/16" Hex Nut	1
11	52020	5/16" Nylon Locknut	1
12	30010	3022 Flanged Flat Wheel Sub-Assembly	2
		2" Flat Wheel	2
		Wheel Bearing	4

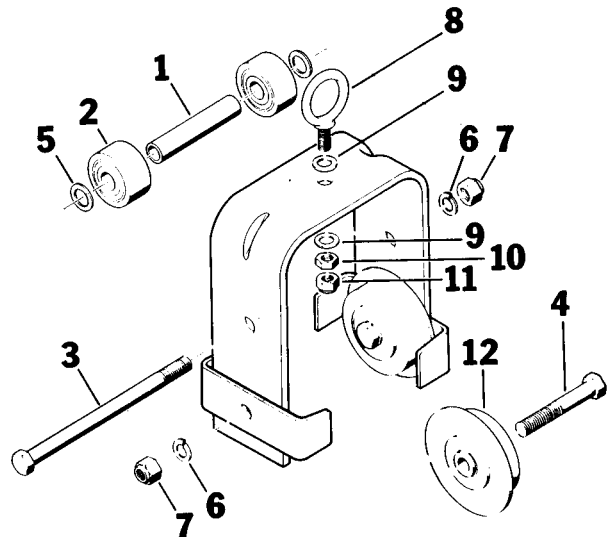


**FT-333 and FT-333-B OPTIONS**  
 (See Page 27 for Optional Wheels)

STOCK CODE		DESCRIPTION
30020	3039	2" Flanged Contour Wheel Assembly

**FT-233, FT-233-B (BUMPER)**  
**FT-266, FT-266-B (BUMPER)**

REF.	STOCK CODE	DESCRIPTION	QUANTITY
1	55710	Ft. Spacer	1
2	56170	3021 1.25" Guide Roller	2
3	50590	3/8" Hex Bolt	1
4	50510	3/8" Hex Bolt	2
5	53040	3/8" Washer	2
6	53200	3/8" Lockwasher	3
7	52080	3/8" Nylon Locknut	3
8	50020	5/16" Eyebolt	1
9	53030	5/16" Washer	2
10	52040	5/16" Hex Nut	1
11	52020	5/16" Nylon Locknut	1
12	30020	3039 Flanged Contour Wheel Sub-Assembly	2
		2" Contour Wheel	2
		Wheel Bearing	4



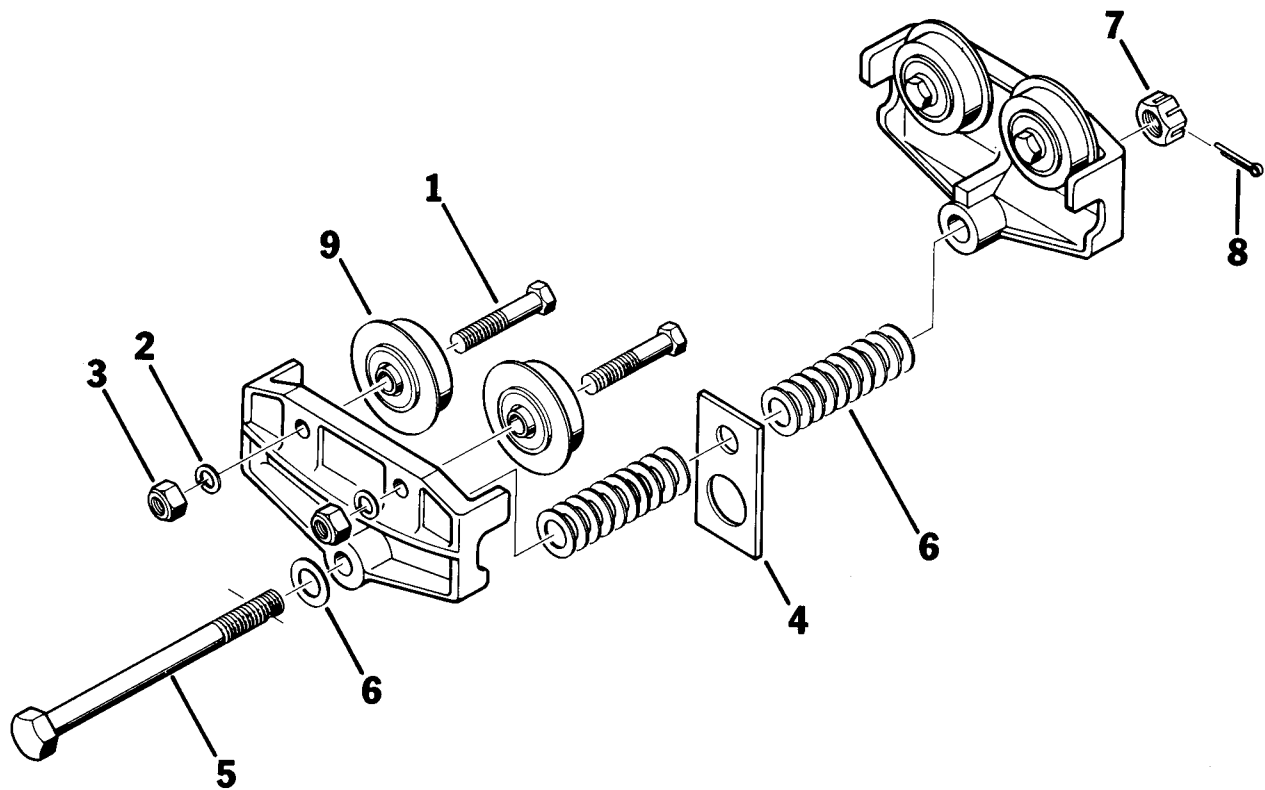
**MT-250-B**

REF.	STOCK CODE	DESCRIPTION	QUANTITY
1	50510	3/8" Hex Bolt	4
2	53200	3/8" Lockwasher	4
3	52080	3/8" Nylon Locknut	4
4	61180	MT-250B Hanger Strap	1
5	50910	1/2" Hex Bolt	1
6	53140	1/2" Washer	18
7	52220	1/2" Slotted Hex Nut	1
8	54040	1/8" Cotter Pin	1
9	30010	3022 Flanged Flat Wheel Sub-Assembly	4
		2" Flanged Flat Wheel	4
		Wheel Bearing	8

**MT-250-B OPTIONS**

(See Page 27 for Optional Wheels)

STOCK CODE	DESCRIPTION
30020	3039 2" Flanged Contour Wheel Assembly

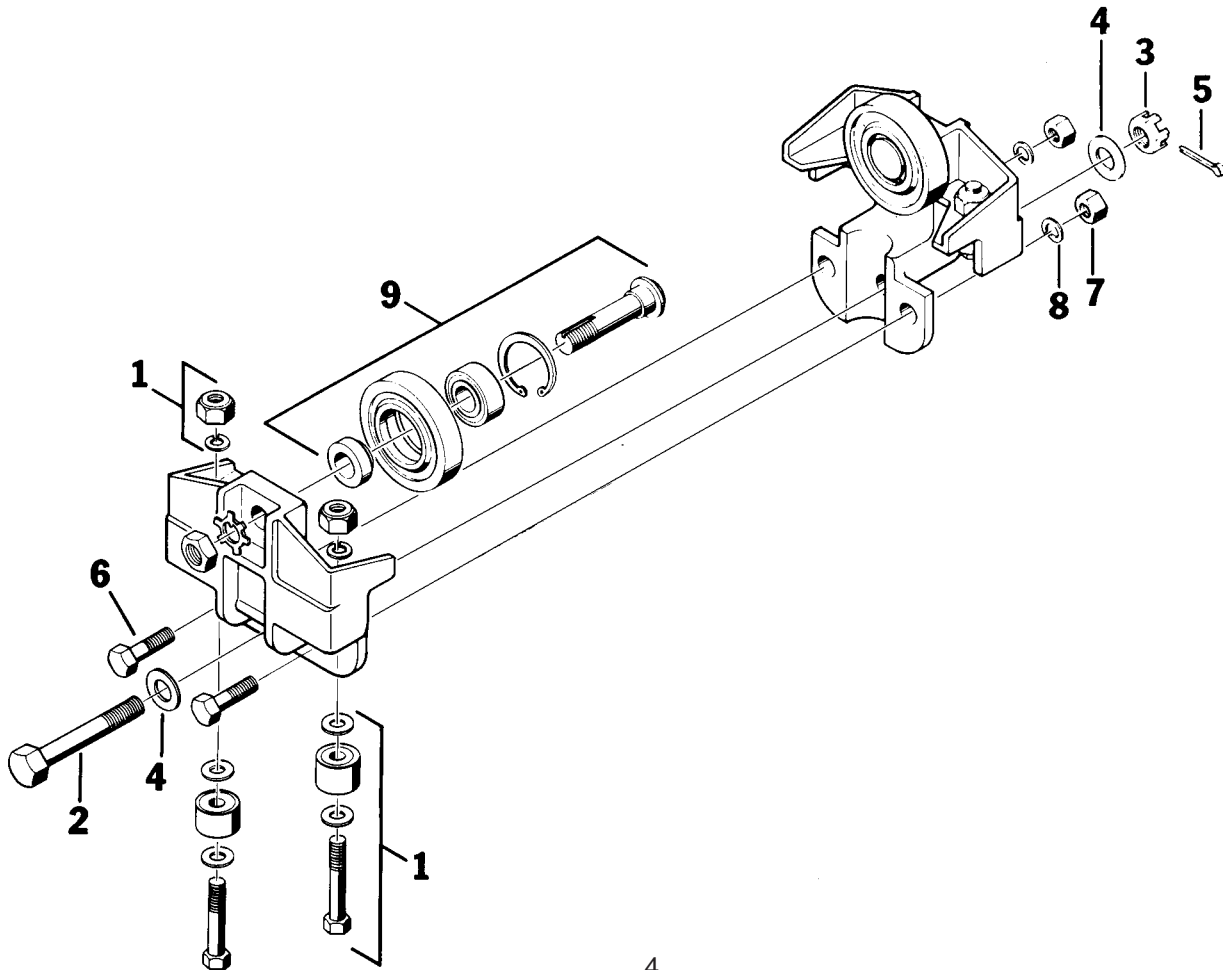


**MBC-500-2**  
**MBC-500-2-4**

REF.	STOCK CODE	DESCRIPTION	QUANTITY
1	15010	Guide Roller Sub-Assembly	4
		3021 1.25" Guide Roller	4
		3/8" Hex Bolt	4
		3/8" Nylon Locknut	4
		3/8" Washer	8
		3/8" Lockwasher	4
2	51110	5/8" Hex Bolt	1
3	52290	5/8" Slotted Hex Nut	1
4	53070	5/8" Washer	2
5	54050	1/8" Cotter Pin	1
6	50500	3/8" Hex Bolt	2
7	52080	3/8" Nylon Locknut	2
8	53200	3/8" Lockwasher	2
9	30090	3049 Flat Wheel Sub-Assembly	2
		3.2" Flat Wheel	2
		Snap Ring	2
		Wheel Bearing	2
		Stud	2
		Spacer	2
		5/8" Star Lockwasher	2
		5/8" Hex Nut	2

**MBC-500-2 and MBC-500-2-4 OPTIONS**  
(See Page 27 for Optional Wheels)

STOCK CODE	DESCRIPTION
30110	3.2" Contour Wheel Assembly
30370	3.2" Flanged Bronze Wheel Assembly
30420	4" Flat Conveyor Wheel Assembly
30430	4" Contour Conveyor Wheel Assembly

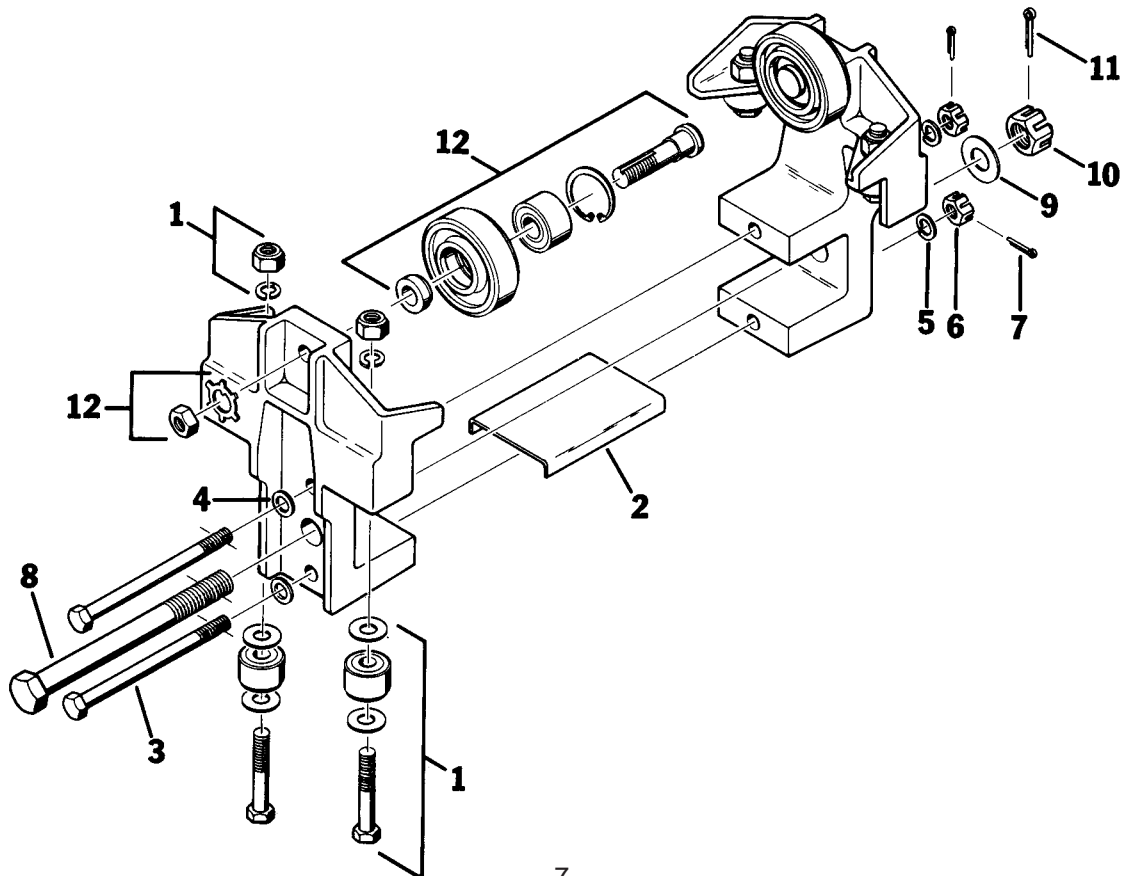


**SAC-500-2  
SAC-500-2-4**

REF.	STOCK CODE	DESCRIPTION	QUANTITY
1	15010	Guide Roller Sub-Assembly	4
		3021 1.25" Guide Roller	4
		3/8" Hex Bolt	4
		3/8" Nylon Locknut	4
		3/8" Washer	8
		3/8" Lockwasher	4
2	75050	SAC-500 Brass Pad	1
3	50610	3/8" Hex Bolt	2
4	53040	3/8" Washer	2
5	53200	3/8" Lockwasher	2
6	52110	3/8" Slotted Hex Nut	2
7	54010	3/32" Cotter Pin	2
8	51170	5/8" Hex Bolt	1
9	53070	5/8" Washer	1
10	52290	5/8" Slotted Hex Nut	1
11	54050	1/8" Cotter Pin	1
12	30090	3049 Flat Wheel Sub-Assembly	2
		3.2" Flat Wheel	2
		Snap Ring	2
		Wheel Bearing	2
		Stud	2
		Spacer	2
		5/8" Star Lockwasher	2
		5/8" Hex Nut	2

**SAC-500-2 and SAC-500-2-4 OPTIONS**  
(See Page 27 for Optional Wheels)

STOCK CODE	STOCK CODE	DESCRIPTION
30110	3050	3.2" Contour Wheel Assembly
30370	3065	3.2" Flanged Bronze Wheel Assembly
30420	3017	4" Flat Conveyor Wheel Assembly
30430	3018	4" Contour Conveyor Wheel Assembly



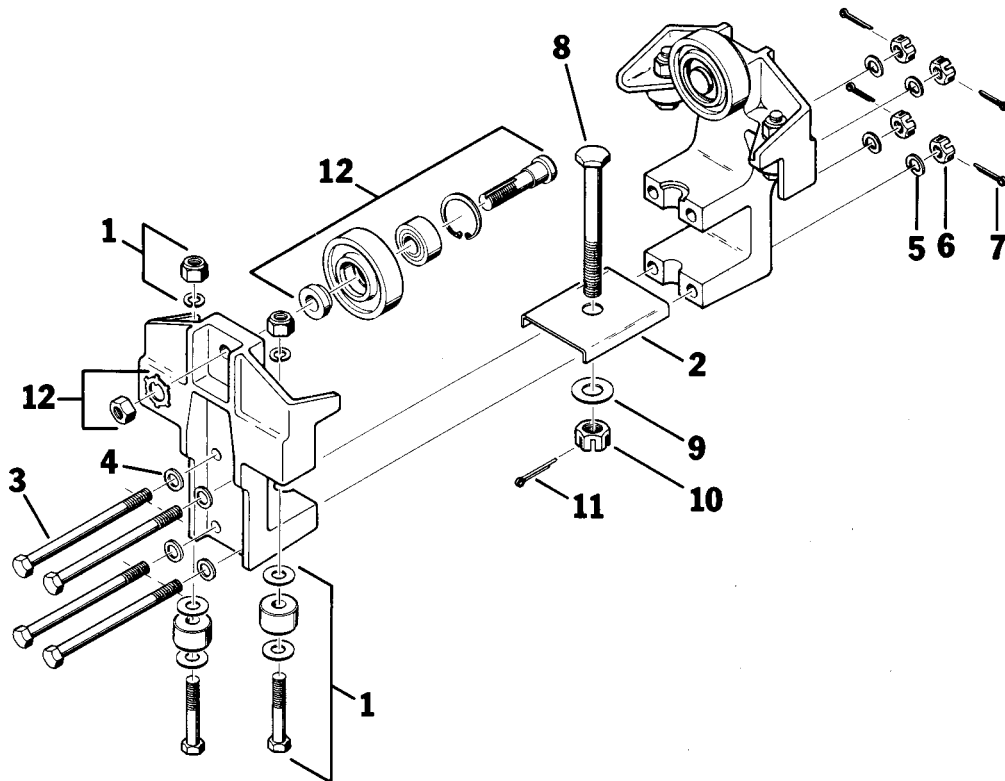


**AC-500-2  
AC-500-2-4**

REF.	STOCK CODE	DESCRIPTION	QUANTITY
1	15010	Guide Roller Sub-Assembly	4
		3021 1.25" Guide Roller	4
		3/8" Hex Bolt	4
		3/8" Nylon Locknut	4
		3/8" Washer	8
		3/8" Lockwasher	4
2	75050	SAC-500 Brass Pad	1
3	50610	3/8" Hex Bolt	4
4	53040	3/8" Washer	4
5	53200	3/8" Lockwasher	4
6	52110	3/8" Slotted Hex Nut	4
7	54010	3/32" Cotter Pin	4
8	51090	5/8" Half Head Hex Bolt	1
9	53070	5/8" Washer	1
10	52290	5/8" Slotted Hex Nut	1
11	54050	1/8" Cotter Pin	1
12	30090	3049 Flat Wheel Sub-Assembly	2
		3.2" Flat Wheel	2
		Snap Ring	2
		Wheel Bearing	2
		Stud	2
		Spacer	2
		5/8" Star Lockwasher	2
		5/8" Hex Nut	2

**AC-500-2 and AC-500-2-4 OPTIONS**  
(See Page 27 for Optional Wheels)

STOCK CODE	STOCK CODE	DESCRIPTION
30110	3050	3.2" Contour Wheel Assembly
30370	3065	3.2" Flanged Bronze Wheel Assembly
30420	3017	4" Flat Conveyor Wheel Assembly
30430	3018	4" Contour Conveyor Wheel Assembly

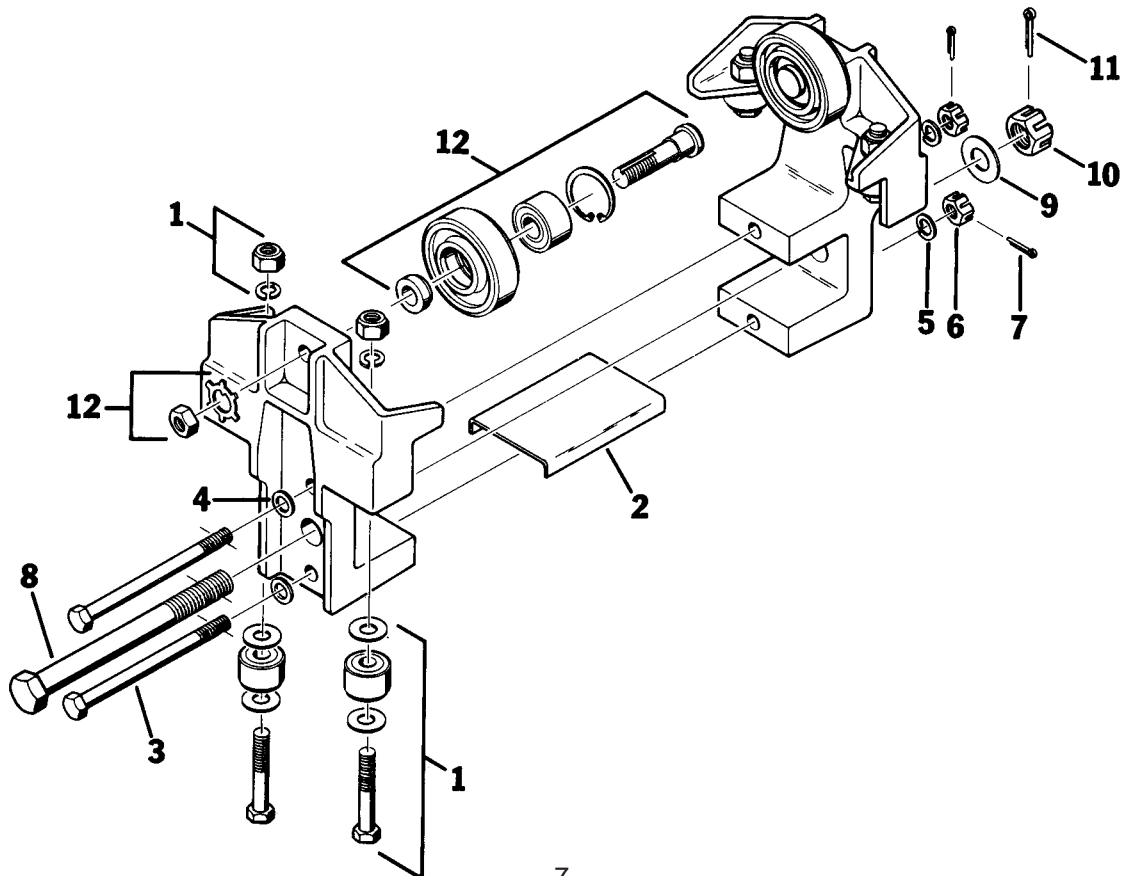


**SAC-500-2  
SAC-500-2-4**

REF.	STOCK CODE	DESCRIPTION	QUANTITY
1	15010	Guide Roller Sub-Assembly	4
		3021 1.25" Guide Roller	4
		3/8" Hex Bolt	4
		3/8" Nylon Locknut	4
		3/8" Washer	8
		3/8" Lockwasher	4
2	75050	SAC-500 Brass Pad	1
3	50610	3/8" Hex Bolt	2
4	53040	3/8" Washer	2
5	53200	3/8" Lockwasher	2
6	52110	3/8" Slotted Hex Nut	2
7	54010	3/32" Cotter Pin	2
8	51170	5/8" Hex Bolt	1
9	53070	5/8" Washer	1
10	52290	5/8" Slotted Hex Nut	1
11	54050	1/8" Cotter Pin	1
12	30090	3049 Flat Wheel Sub-Assembly	2
		3.2" Flat Wheel	2
		Snap Ring	2
		Wheel Bearing	2
		Stud	2
		Spacer	2
		5/8" Star Lockwasher	2
		5/8" Hex Nut	2

**SAC-500-2 and SAC-500-2-4 OPTIONS**  
(See Page 27 for Optional Wheels)

STOCK CODE	STOCK CODE	DESCRIPTION
30110	3050	3.2" Contour Wheel Assembly
30370	3065	3.2" Flanged Bronze Wheel Assembly
30420	3017	4" Flat Conveyor Wheel Assembly
30430	3018	4" Contour Conveyor Wheel Assembly

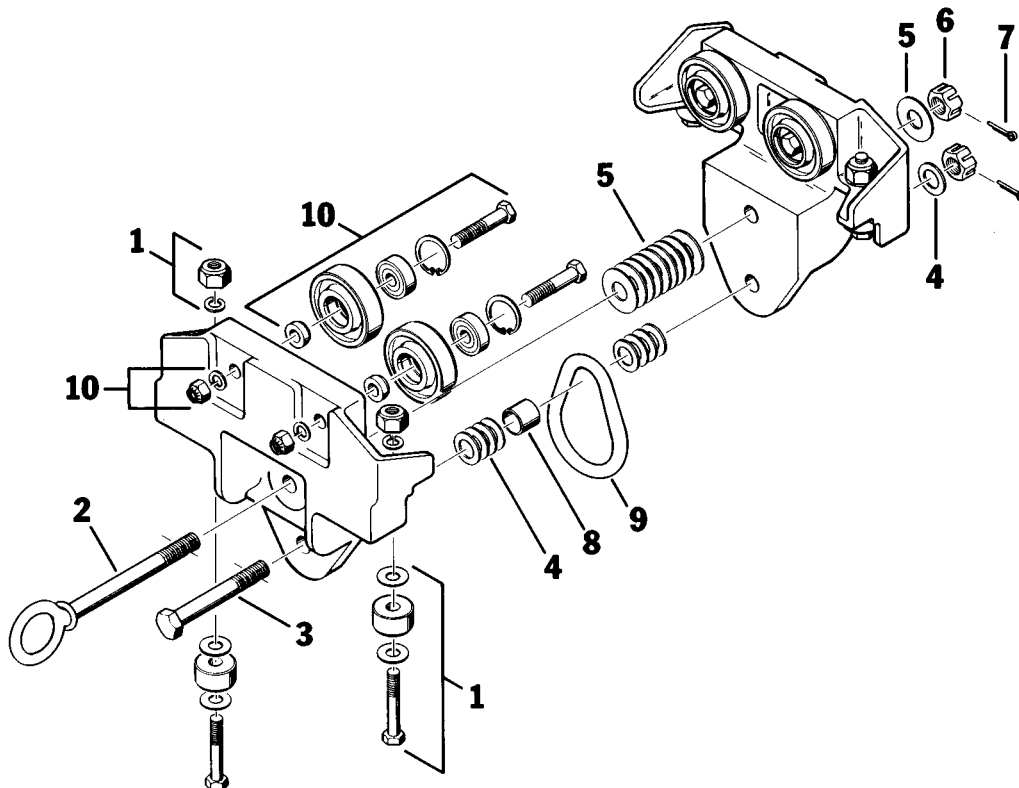


**UT-500-LL  
UT-500-S**

REF.	STOCK CODE	DESCRIPTION	QUANTITY
1	15010	Guide Roller Sub-Assembly	4
		3021 1.25" Guide Roller	4
		3/8" Hex Bolt	4
		3/8" Nylon Locknut	4
		3/8" Washer	8
		3/8" Lockwasher	4
2	50080	1/2" Eyebolt	1
3	58040	1/2" Hex Bolt	1
4	53060	1/2" Washer	17
5	53140	1/2" Washer	17
6	52220	1/2" Slotted Hex Nut	2
7	54040	1/8" Cotter Pin	2
8	55820	Spacer	1
9	72010	1/2" Sling Link (For UT-500-LL Only)	1
10	30040	3052 Flat Wheel Sub-Assembly	4
		2.4" Flat Wheel	4
		Snap Ring	4
		Wheel Bearing	4
		Spacer	4
		3/8" Hex Bolt	4
		3/8" Locknut	4
		3/8" Lockwasher	4

**UT-500-LL and UT-500-S OPTIONS**  
(See Page 27 for Optional Wheels)

STOCK CODE		DESCRIPTION
30050	3053	2.4" Contour Wheel Assembly
30400	3013	3" Flat Conveyor Wheel Assembly
30410	3016	3" Contour Conveyor Wheel Assembly



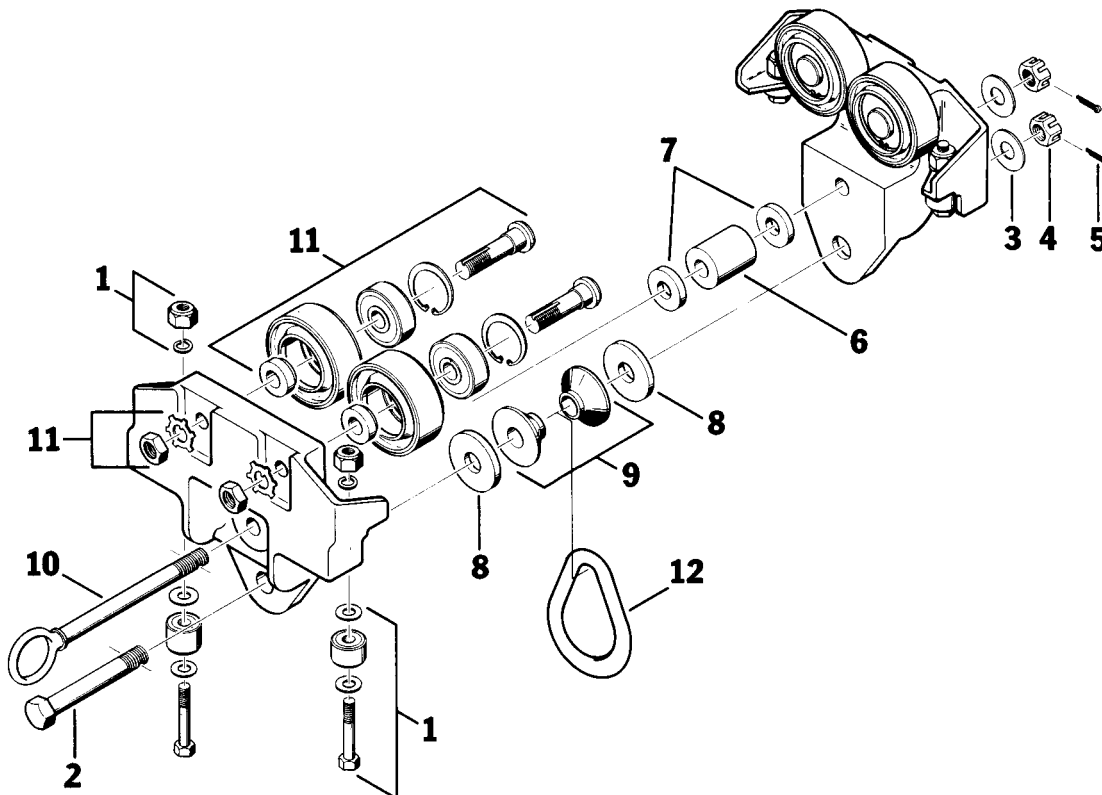
**UT-1000-S  
UT-1000-LL**

REF.	STOCK CODE	DESCRIPTION	QUANTITY
1	15020	Guide Roller Sub-Assembly	4
		3021 1.25" Guide Roller	4
		3/8" Hex Bolt	4
		3/8" Nylon Locknut	4
		3/8" Washer	8
		3/8" Lockwasher	4
2	51100	5/8" Hex Bolt	1
3	53070	5/8" Washer	2
4	52290	5/8" Slotted Hex Nut	2
5	54050	1/8" Cotter Pin	2
6	55660	#4 UT Spacer	1
7	55670	#5 UT Spacer	2
8	55700	#10 UT Spacer	2
9	78440	UT-1000 Spool	2
10	50110	5/8" Eye Bolt	1
11	30090	3049 Flat Wheel Sub-Assembly	4
		3.2" Flat Wheel	4
		Snap Ring	4
		Wheel Bearing	4
		Stud	4
		Spacer	4
		5/8" Star Lockwasher	4
		5/8" Hex Nut	4
12	72010	1/2" Sling Link (For UT-1000-LL Only)	1

**UT-1000-S and UT-1000-LL OPTIONS**

(See Page 27 for Optional Wheels)

STOCK CODE		DESCRIPTION
30110	3050	3.2" Contour Wheel Assembly
30370	3065	3.2" Flanged Bronze Wheel Assembly
30420	3017	4" Flat Conveyor Wheel Assembly
30430	3018	4" Contour Conveyor Wheel Assembly



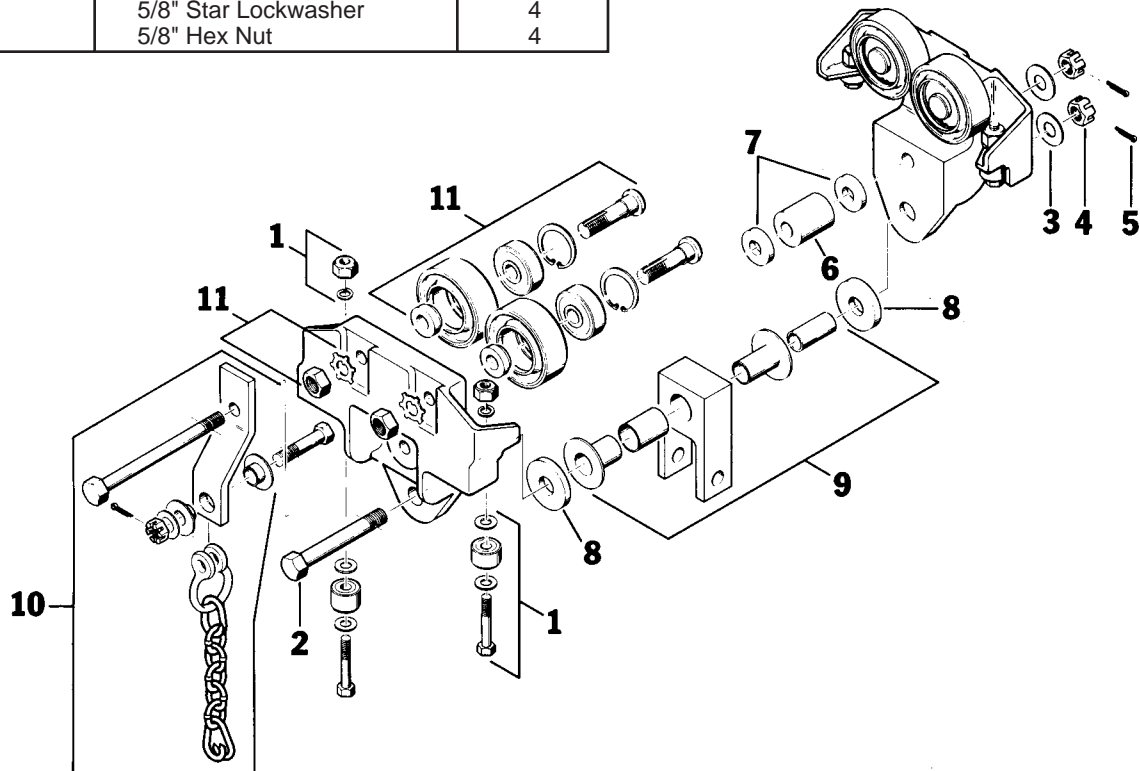
**UT-1000-YBC**

REF.	STOCK CODE	DESCRIPTION	QUANTITY		
1	15020	Guide Roller Sub-Assembly	4		
		3021 1.25" Guide Roller	4		
		3/8" Hex Bolt	4		
		3/8" Nylon Locknut	4		
		3/8" Washer	8		
		3/8" Lockwasher	4		
		5/8" Hex Bolt	1		
		5/8" Washer	2		
		5/8" Slotted Hex Nut	2		
5	54050	1/8" Cotter Pin	2		
6	55660	#4 UT Spacer	1		
7	55670	#5 UT Spacer	2		
8	55700	#10 UT Spacer	2		
9	15085	Yoke Block Sub-Assembly	1		
		Yoke Block - Aluminum	1		
		#8 UT Spacer	1		
		#9 UT Spacer	1		
		#6 UT Nylon Bushing	1		
		#7 UT Nylon Bushing	1		
		10	15150	Safety Strap Sub-Assembly	1
				5/8" Hex Bolt	1
				UT Safety Strap	1
				#12 UT Nylon Bushing	1
				#13 UT Nylon Bushing	1
Anchor Shackle	1				
1/2" Hex Bolt	1				
1/2" Slotted Hex Nut	1				
1/8" Cotter Pin	1				
3/8" x 2 Repair Links	2				
3/8" BB Chain - Links	5				
11	30090	3049 Flat Wheel Sub-Assy.	4		
		3.2" Flat Wheel	4		
		Snap Ring	4		
		Wheel Bearing	4		
		Stud	4		
		Spacer	4		
		5/8" Star Lockwasher	4		
		5/8" Hex Nut	4		

**UT-1000-YBC OPTIONS**

(See Page 27 for Optional Wheels)

STOCK CODE		DESCRIPTION
30110	3050	3.2" Contour Wheel Assy.
30370	3065	3.2" Flanged Bronze Wheel Assy.
30420	3017	4" Flat Conveyor Wheel Assy.
30430	3018	4" Contour Conveyor Wheel Assembly



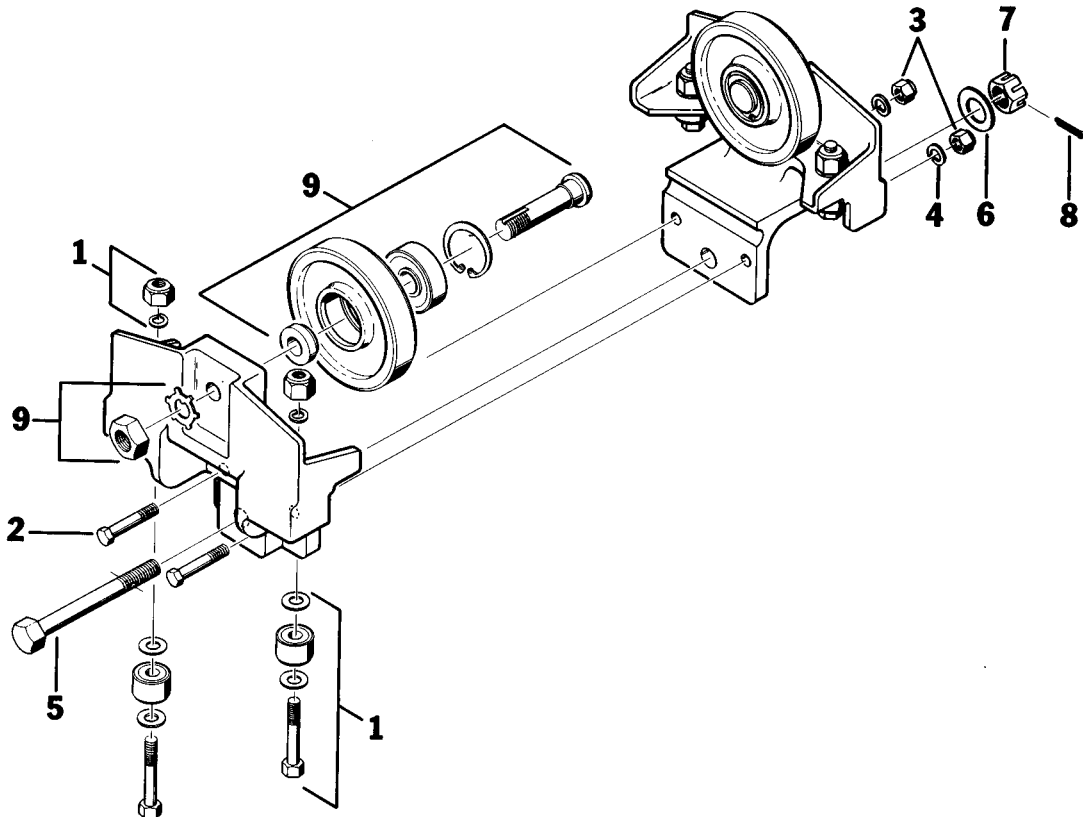
**MBC-1000-2**

REF.	STOCK CODE	DESCRIPTION	QUANTITY
1	15020	Guide Roller Sub-Assembly	4
		3021 1.25" Guide Roller	4
		3/8" Hex Bolt	4
		3/8" Nylon Locknut	4
		3/8" Washer	8
		3/8" Lockwasher	4
2	50500	3/8" Hex Bolt	2
3	52080	3/8" Nylon Locknut	2
4	53200	3/8" Lockwasher	2
5	51110	5/8" Hex Bolt	1
6	53070	5/8" Washer	4
7	52290	5/8" Slotted Hex Nut	1
8	54050	1/8" Cotter Pin	1
9	30250	3011 Flat Wheel Sub-Assembly	2
		4.6" Flat Wheel	2
		Snap Ring	2
		Wheel Bearing	2
		Stud	2
		Spacer	2
		5/8" Star Lockwasher	2
		5/8" Hex Nut	2

**MBC-1000-2 OPTIONS**

(See Page 28 for Optional Wheels)

STOCK CODE	STOCK CODE	DESCRIPTION
30270	3029	4.6" Contour Wheel Assembly
30290	3005	4.6" Double, Flat Wheel Assembly
30240	3038	4.6" Double, Contour Wheel Assembly
30380	3054	4.5" Flanged Bronze Wheel Assembly



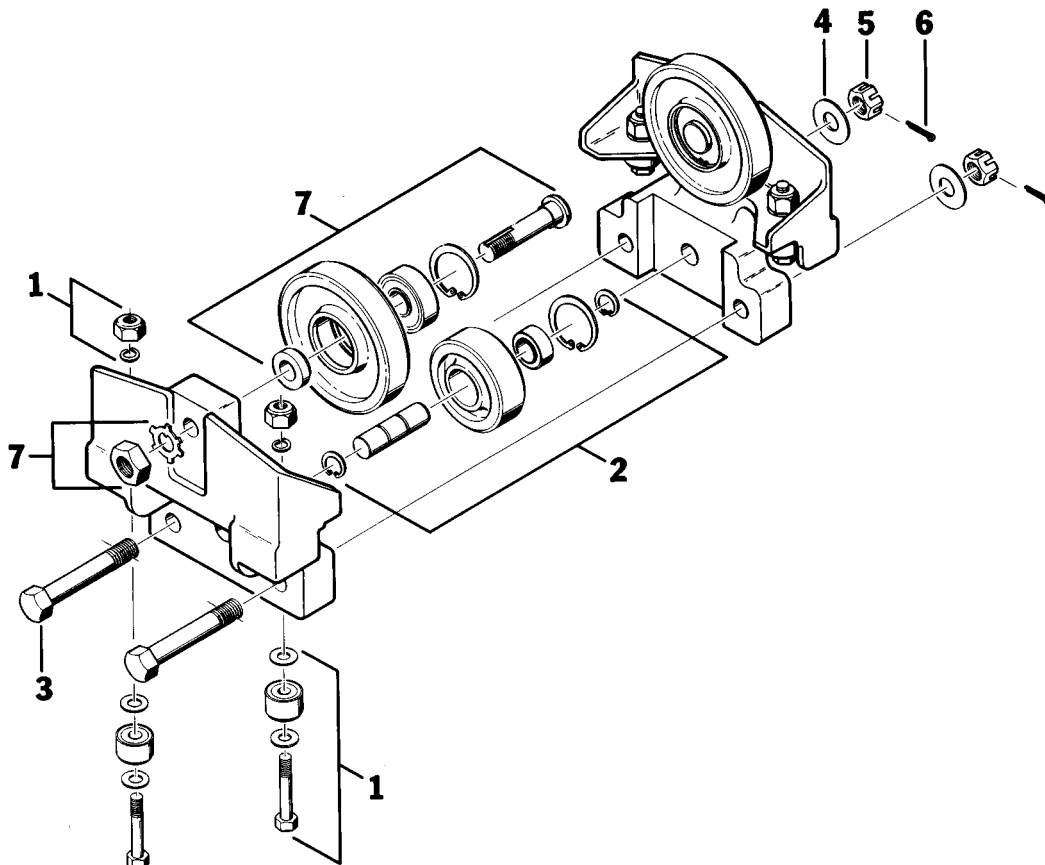
**MBC-1000-3**

REF.	STOCK CODE	DESCRIPTION	QUANTITY
1	15020	Guide Roller Sub-Assembly	4
		3021 1.25" Guide Roller	4
		3/8" Hex Bolt	4
		3/8" Nylon Locknut	4
		3/8" Washer	8
		3/8" Lockwasher	4
2	30075	Kick-Up Wheel Sub-Assembly	1
		3.12" Kick-Up Wheel	1
		Wheel Bearing	1
		Snap Ring	1
		Snap Ring	2
		Kick-Up Pin	1
3	51110	5/8" Hex Bolt	2
4	53070	5/8" Washer	8
5	52290	5/8" Slotted Hex Nut	2
6	54050	1/8" Cotter Pin	2
7	30250	3011 Flat Wheel Sub-Assembly	2
		4.6" Flat Wheel	2
		Snap Ring	2
		Wheel Bearing	2
		Stud	2
		Spacer	2
		5/8" Star Lockwasher	2
		5/8" Hex Nut	2

**MBC-1000-3 OPTIONS**

(See Page 28 for Optional Wheels)

STOCK CODE	STOCK CODE	DESCRIPTION
30270	3029	4.6" Contour Wheel Assembly
30290	3005	4.6" Double, Flat Wheel Assembly
30240	3038	4.6" Double, Contour Wheel Assembly
30380	3054	4.5" Flanged Bronze Wheel Assembly



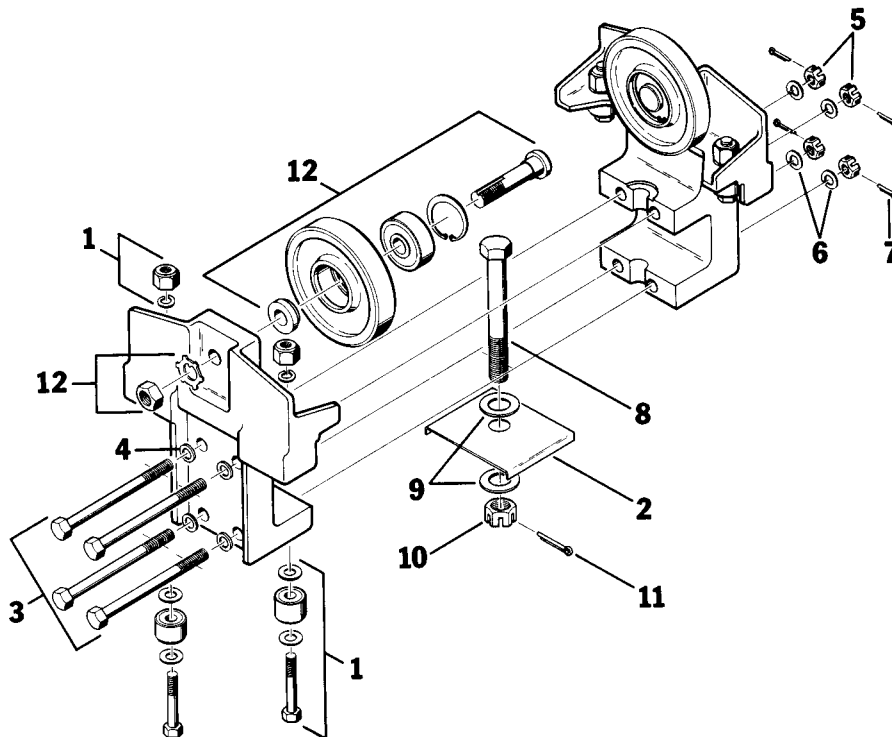
**AC-1027**

REF.	STOCK CODE	DESCRIPTION	QUANTITY
1	15020	Guide Roller Sub-Assembly	4
		3021 1.25" Guide Roller	4
		3/8" Hex Bolt	4
		3/8" Nylon Locknut	4
		3/8" Washer	8
		3/8" Lockwasher	4
2	75040	SAC-1020 Brass Pad	1
3	50610	3/8" Hex Bolt	4
4	53040	3/8" Washer	4
5	52110	3/8" Slotted Hex Nut	4
6	53200	3/8" Lockwasher	4
7	54010	3/32" Cotter Pin	4
8	51370	3/4" Hex Bolt	1
9	53080	3/4" Washer	2
10	52370	3/4" Slotted Hex Nut	1
11	54060	1/8" Cotter Pin	1
12	30250	3011 Flat Wheel Sub-Assembly	2
		4.6" Flat Wheel	2
		Snap Ring	2
		Wheel Bearing	2
		Stud	2
		Spacer	2
		5/8" Star Lockwasher	2
		5/8" Hex Nut	2

**AC-1027 OPTIONS**

(See Page 28 for Optional Wheels)

STOCK CODE	STOCK CODE	DESCRIPTION
30270	3029	4.6" Contour Wheel Assembly
30290	3005	4.6" Double, Flat Wheel Assembly
30240	3038	4.6" Double, Contour Wheel Assembly
30380	3054	4.5" Flanged Bronze Wheel Assembly





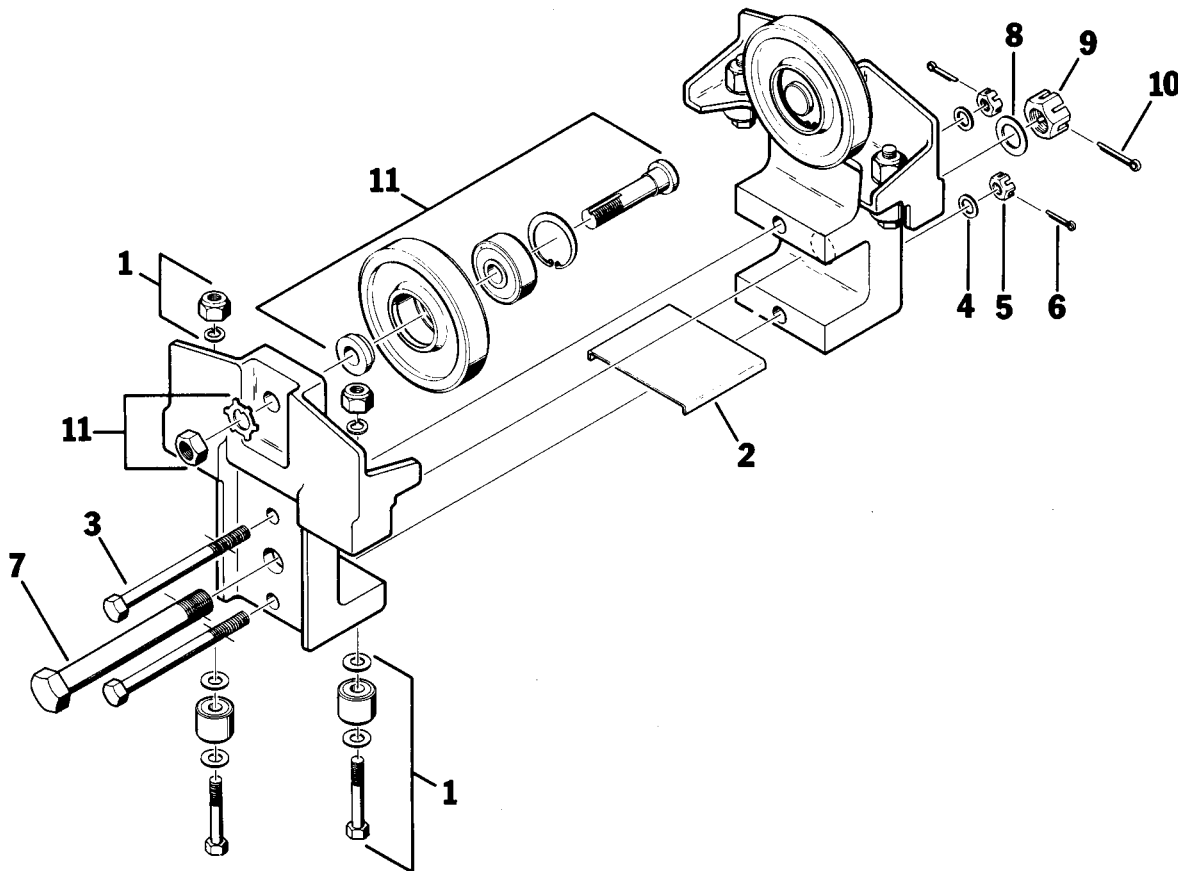
### SAC-1020

REF.	STOCK CODE	DESCRIPTION	QUANTITY
1	15020	Guide Roller Sub-Assembly	4
		3021 1.25" Guide Roller	4
		3/8" Hex Bolt	4
		3/8" Nylon Locknut	4
		3/8" Washer	8
		3/8" Lockwasher	4
2	75040	SAC-1020 Brass Pad	1
3	50910	1/2" Hex Bolt	2
4	53060	1/2" Washer	2
5	52220	1/2" Slotted Hex Nut	2
6	54040	1/8" Cotter Pin	2
7	51390	3/4" Hex Bolt	1
8	53080	3/4" Washer	2
9	53270	3/4" Slotted Hex Nut	1
10	54060	1/8" Cotter Pin	1
11	30250	3011 Flat Wheel Sub-Assembly	2
		4.6" Flat Wheel	2
		Snap Ring	2
		Wheel Bearing	2
		Stud	2
		Spacer	2
		5/8" Star Lockwasher	2
		5/8" Hex Nut	2

### SAC-1020 OPTIONS

(See Page 28 for Optional Wheels)

STOCK CODE	STOCK CODE	DESCRIPTION
30270	3029	4.6" Contour Wheel Assembly
30290	3005	4.6" Double, Flat Wheel Assembly
30240	3038	4.6" Double, Contour Wheel Assembly
30380	3054	4.5" Flanged Bronze Wheel Assembly



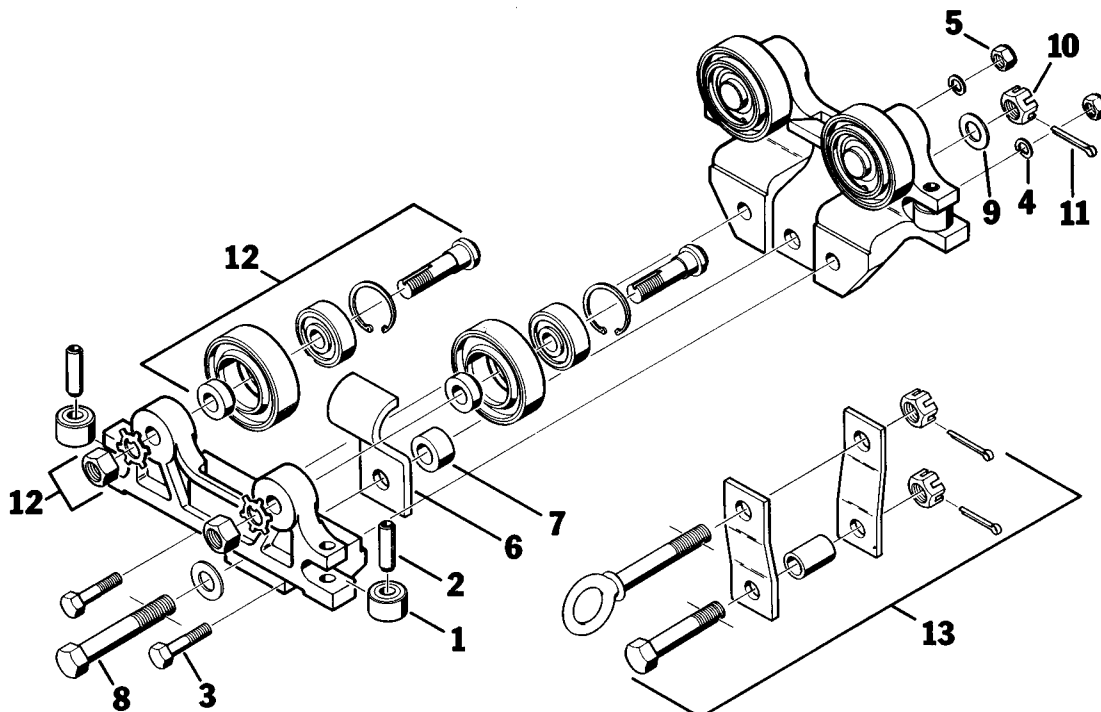
**BT-325, BT-266, BT-333  
BT-325-DHS, BT-266-DHS, BT-333-DHS**

REF.	STOCK CODE	DESCRIPTION	QUANTITY
1	15025	3021-1 1.25" Guide Roller	4
2	54200	3/8" x 1.75" Spring Pin	4
3	50500	3/8" Hex Bolt	2
4	53200	3/8" Lockwasher	2
5	52080	3/8" Nylon Nut	2
6	61120	Safety Strap	2
7	55590	Spacer (Specify Trolley Model)	1
8	51110	5/8" Hex Bolt	1
9	53070	5/8" Washer	2
10	52290	5/8" Slotted Hex Nut	1
11	54050	1/8" Cotter Pin	1
12	30090	3049 Flat Wheel Sub-Assembly	4
		3.2" Flat Wheel	4
		Snap Ring	4
		Wheel Bearing	4
		Stud	4
		Spacer	4
		5/8" Star Lockwasher	4
		5/8" Hex Nut	4
13**	15100	DHS-5011-1 Hanger Strap Sub-Assembly	1
		5/8" Eyebolt	1
		Hanger Strap	2
		Spacer	1
		5/8" Hex Bolt	1
		5/8" Slotted Hex Nut	2
		1/8" Cotter Pin	2

\*\* For DHS Option Only

**BT-325, BT-266, BT-333  
BT-325-DHS, BT-266-DHS, BT-333-DHS OPTIONS  
(See Page 27 for Optional Wheels)**

STOCK CODE		DESCRIPTION
30110	3050	3.2" Contour Wheel Assembly
30370	3065	3.2" Flanged Bronze Wheel Assembly
30420	3017	4" Flat Conveyor Wheel Assembly
30430	3018	4" Contour Conveyor Wheel Assembly



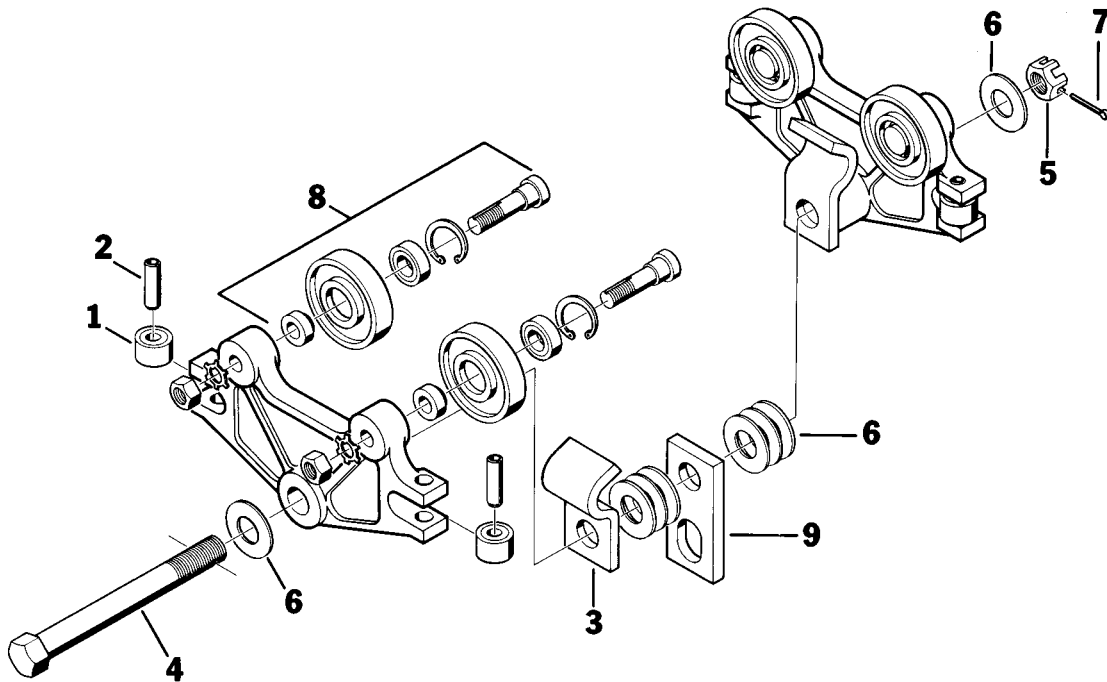
T-612

REF.	STOCK CODE	DESCRIPTION	QUANTITY
1	15025	3021 1.25" Guide Roller	4
2	54200	3/8" x 1.75" Spring Pin	4
3	61210	T-612 Safety Strap	2
4	51450	3/4" Hex Bolt	1
5	52370	3/4" Slotted Hex Nut	1
6	53160	3/4" Washer	20
7	54060	1/8" Cotter Pin	1
8	30090	3049 Flat Wheel Sub-Assembly	4
		3.2" Flat Wheel	4
		Snap Ring	4
		Wheel Bearing	4
		Stud	4
		Spacer	4
		5/8" Star Lockwasher	4
		5/8" Hex Nut	4
9	61200	T-612 Hanger (Optional)	1

T-612 OPTIONS

(See Page 27 for Optional Wheels)

STOCK CODE	DESCRIPTION
30110	3050 3.2" Contour Wheel Assembly
30370	3065 3.2" Flanged Bronze Wheel Assembly
30420	3017 4" Flat Conveyor Wheel Assembly
30430	3018 4" Contour Conveyor Wheel Assembly

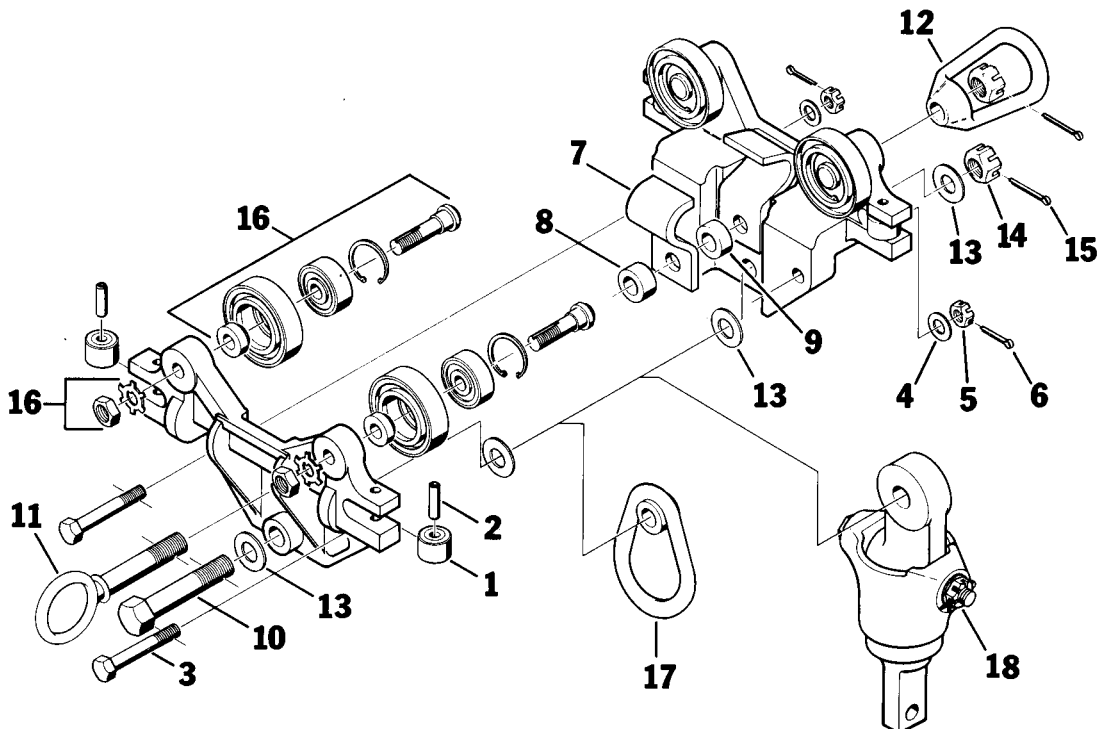


**T-325, T-904, T-906  
T-325-LL, T-904-LL, T-906-LL  
TS-325, TS-904, TS-906**

REF.	STOCK CODE	DESCRIPTION	QUANTITY
1	15025	3021 1.25" Guide Roller	4
2	54200	3/8" x 1.75" Spring Pin	4
3	50840	1/2" Hex Bolt	2
4	53060	1/2" Washer	2
5	52220	1/2" Slotted Hex Nut	2
6	54040	1/8" Cotter Pin	2
7	61190	Safety Strap	2
8	55790	Spacer (Specify Trolley Model)	2
9	55800	Spacer (Specify Trolley Model)	1
10	51360	3/4" Hex Bolt	1
11	50120	3/4" Eyebolt	1
12	52380	3/4" Eye nut	1
13	53080	3/4" Washer	4
14	52370	3/4" Slotted Hex Nut	2
15	54060	1/8" Cotter Pin	2
16	30090	3049 Flat Wheel Sub-Assembly	4
		3.2" Flat Wheel	4
		Snap Ring	4
		Wheel Bearing	4
		Stud	4
		Spacer	4
		5/8" Star Lockwasher	4
		5/8" Hex Nut	4
17	72040	5/8" Sling Link (For -LL Option Only)	1
18	15240	S-300-0 Swivel Assy (For TS- Option Only)	1

**T-325, T-904, T-906  
T-325-LL, T-904-LL, T-906-LL  
TS-325, TS-904, TS-906 OPTIONS  
(See Page 27 for Optional Wheels)**

STOCK CODE		DESCRIPTION
30110	3050	3.2" Contour Wheel Assembly
30370	3065	3.2" Flanged Bronze Wheel Assembly
30420	3017	4" Flat Conveyor Wheel Assembly
30430	3018	4" Contour Conveyor Wheel Assembly



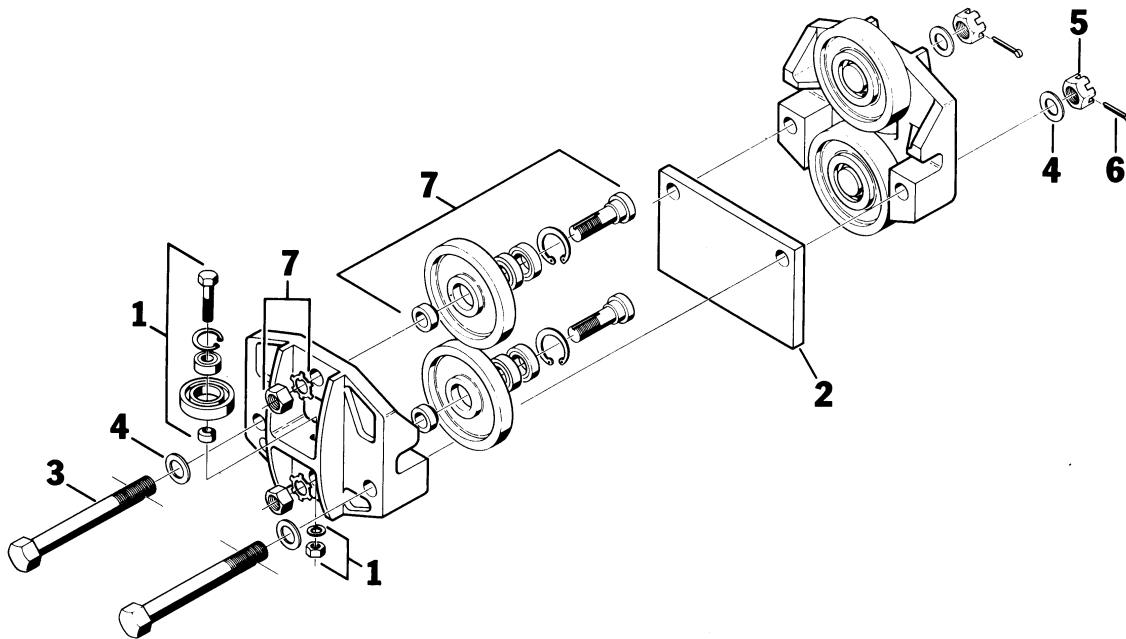
**TSE-1017**

REF.	STOCK CODE	DESCRIPTION	QUANTITY
1	15038	3052-1 Guide Roller Sub-Assembly	2
		2.4" Flat Wheel	2
		Snap Ring	2
		Wheel Bearing	2
		Spacer	2
		3/8" Hex Bolt	2
		3/8" Lockwasher	2
		3/8" Nylon Nut	2
2	55815	TSE Spacer	1
3	51170	5/8" Hex Bolt	2
4	53070	5/8" Washer	4
5	52290	5/8" Slotted Hex Nut	2
6	54050	1/8" Cotter Pin	2
7	30290	3005 Double Flat Wheel Sub-Assembly	4
		4.6" Flat Wheel	4
		Snap Ring	4
		Wheel Bearing	8
		Stud	4
		Spacer	4
		5/8" Star Lockwasher	4
		5/8" Hex Nut	4

**TSE-1017 OPTIONS**

(See Page 28 for Optional Wheels)

STOCK CODE		DESCRIPTION
30240	3038	4.6" Double, Contour Wheel Assembly



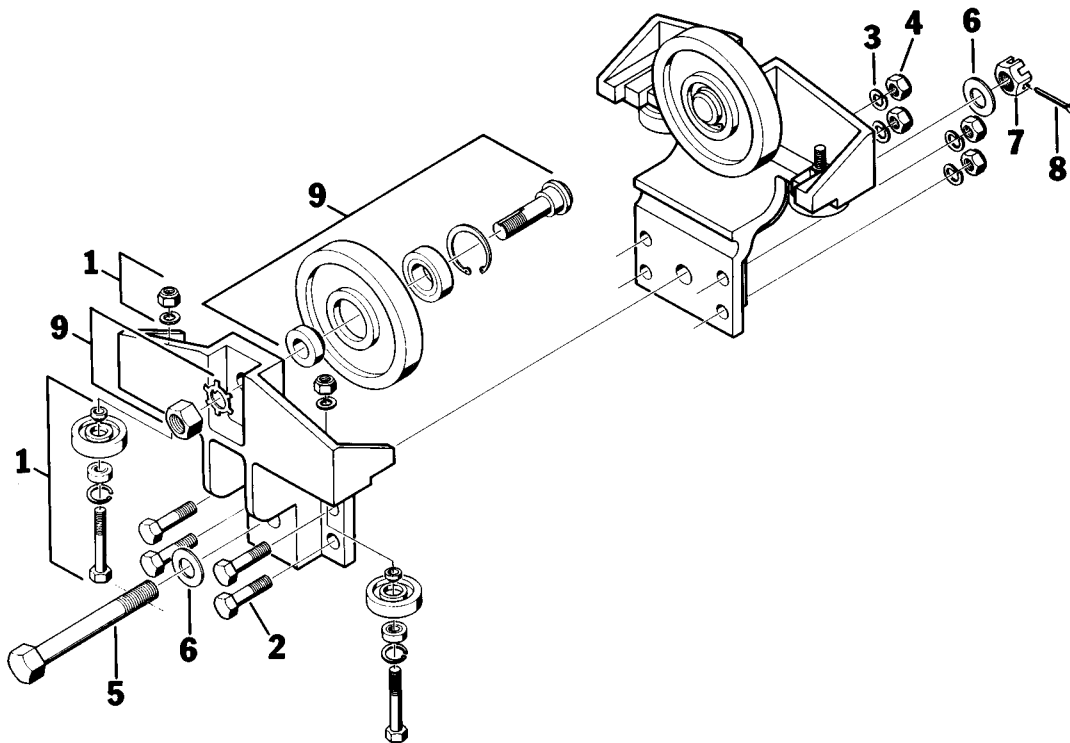
**MBC-2500**

REF.	STOCK CODE	DESCRIPTION	QUANTITY
1	15035	3052-1 Guide Roller Sub-Assembly	4
		2.4" Flat Wheel	4
		Snap Ring	4
		Wheel Bearing	4
		Spacer	4
		3/8" Hex Bolt	4
		3/8" Lockwasher	4
		3/8" Nylon Nut	4
2	50780	1/2" Hex Bolt	4
3	53230	1/2" Lockwasher	4
4	52200	1/2" Nylon Locknut	4
5	51390	3/4" Hex Bolt	1
6	53080	3/4" Washer	6
7	52370	3/4" Slotted Hex Nut	1
8	54060	1/8" Cotter Pin	1
9	30310	3046 Flat Wheel Sub-Assembly	2
		4.8" Flat Wheel	2
		Snap Ring	2
		Wheel Bearing	2
		Stud	2
		Spacer	2
		3/4" Star Lockwasher	2
		3/4" Hex Nut	2

**MBC-2500 OPTIONS**

(See Pages 28-29 for Optional Wheels)

STOCK CODE	STOCK CODE	DESCRIPTION
30320	3047	4.8" Contour Wheel Assembly
30390	3051	4.8" Flanged Bronze Wheel Assembly
30350	3008	5.6" Double, Flat Wheel Assembly
30360	3058	5.6" Double, Contour Wheel Assembly
30440	3023	6" Flat Conveyor Wheel Assembly
30450	3024	6" Contour Conveyor Wheel Assembly



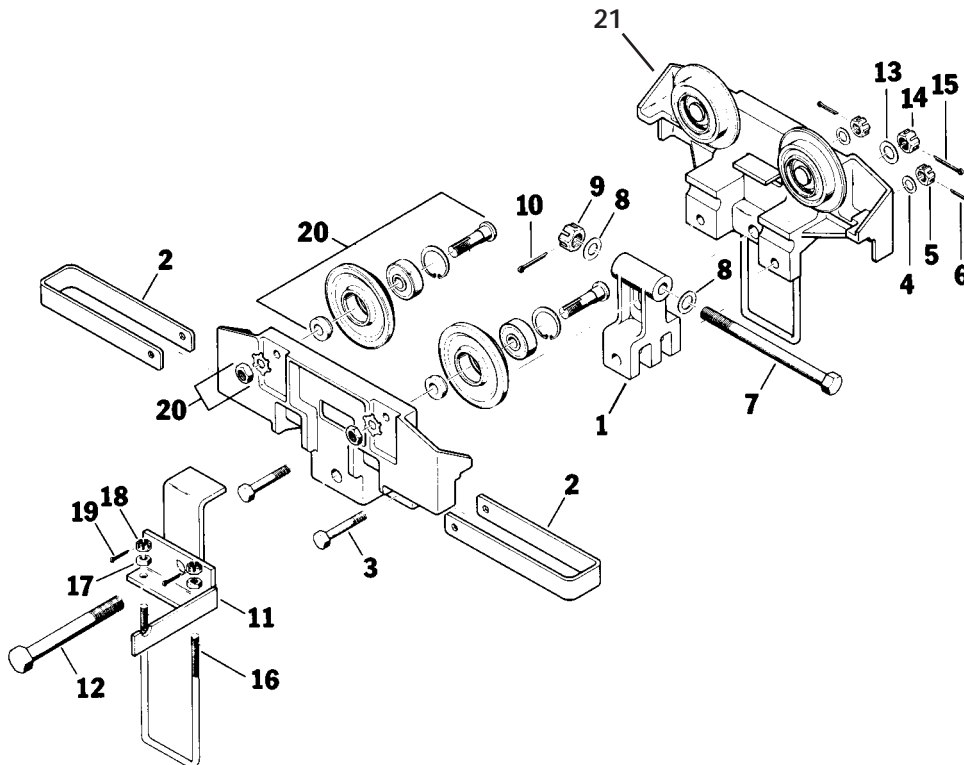
TT-1023

REF.	STOCK CODE	DESCRIPTION	QUANTITY
1	59320	TT Yoke Casting	1
2	62070	TT Bumper	2
3	50810	1/2" Hex Bolt	2
4	53060	1/2" Washer	2
5	52220	1/2" Slotted Hex Nut	2
6	54040	1/8" Cotter Pin	2
7	51450	3/4" Hex Bolt	1
8	53080	3/4" Washer	2
9	52370	3/4" Slotted Hex Nut	1
10	54060	1/8" Cotter Pin	1
11	15130	TT Safety Sub-Assembly	1
12	51170	5/8" Hex Bolt	1
13	53070	5/8" Washer	2
14	52290	5/8" Slotted Hex Nut	1
15	54050	1/8" Cotter Pin	1
16	50625	TT 3/8" U-Bolt	2
17	52120	3/8" Hex Nut	4
18	52110	3/8" Slotted Hex Nut	4
19	54010	3/32" Cotter Pin	4
20	30250	3011 4.6" Flat Wheel Assembly	4
21	15020	3021-1 1.25" Guide Roller Assembly	4
		Snap Ring	4
		Wheel Bearing	4
		Stud	4
		Spacer	4
		5/8" Star Lockwasher	4
		5/8" Hex Nut	4

TT-1023 OPTIONS

(See Page 28 for Optional Wheels)

STOCK CODE		DESCRIPTION
30270	3029	4.6" Contour Wheel Assembly
30290	3005	4.6" Flat Double Bearing Wheel Assembly
30240	3038	4.6" Contour Double Bearing Wheel Assembly
30380	3054	4.5" Bronze Flanged Wheel Assembly



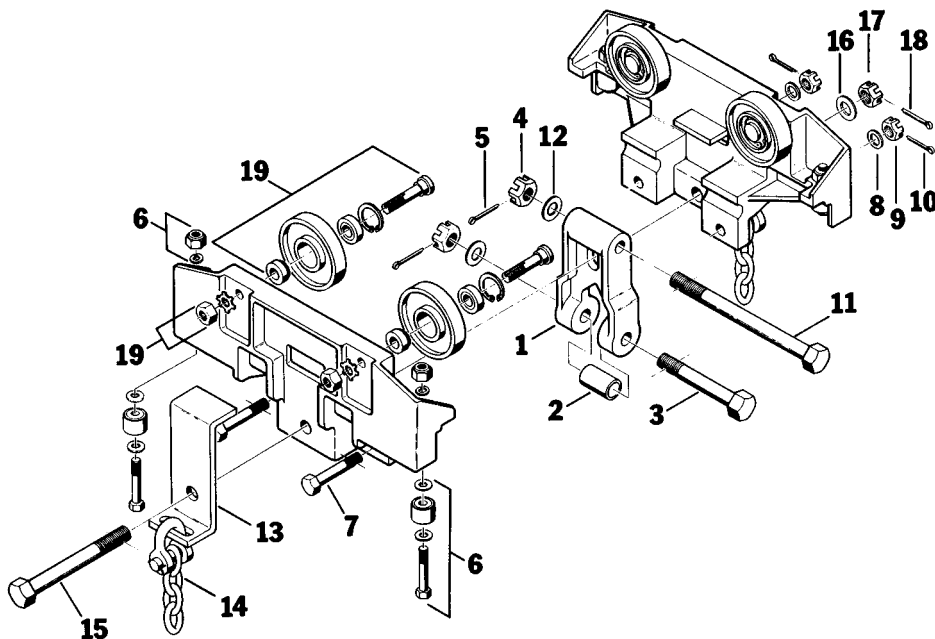
**TT-1023-HT**

REF.	STOCK CODE	DESCRIPTION	QUANTITY
1	59330	HT Yoke Casting	1
2	55740	HT Spacer	1
3	51340	3/4" Hex Bolt	1
4	52370	3/4" Slotted Hex Nut	2
5	54060	1/8" Cotter Pin	2
6	15020	Guide Roller Sub-Assembly	4
		3021 1.25" Guide Roller	4
		3/8" Hex Bolt	4
		3/8" Nylon Locknut	4
		3/8" Washer	8
		3/8" Lockwasher	4
7	50800	1/2" Hex Bolt	2
8	53060	1/2" Washer	2
9	52220	1/2" Slotted Hex Nut	2
10	54040	1/8" Cotter Pin	2
11	51450	3/4" Hex Bolt	1
12	53080	3/4" Washer	2
13	61170	HT Z Safety Strap	2
14	15260	Safety Chain with Shackle (Optional)	2
15	51170	5/8" Hex Bolt	1
16	53070	5/8" Washer	2
17	52290	5/8" Slotted Hex Nut	1
18	54050	1/8" Cotter Pin	1
19	30250	3011 Flat Wheel Sub-Assembly	4
		4.6" Flat Wheel	4
		Snap Ring	4
		Wheel Bearing	4
		Stud	4
		Spacer	4
		5/8" Star Lockwasher	4
		5/8" Hex Nut	4

**TT-1023-HT OPTIONS**

(See Page 28 for Optional Wheels)

STOCK CODE		DESCRIPTION
30270	3029	4.6" Contour Wheel Assembly
30290	3005	4.6" Flat Double Bearing Wheel Assembly
30240	3038	4.6" Contour Double Bearing Wheel Assembly
30380	3054	4.5" Bronze Flanged Wheel Assembly





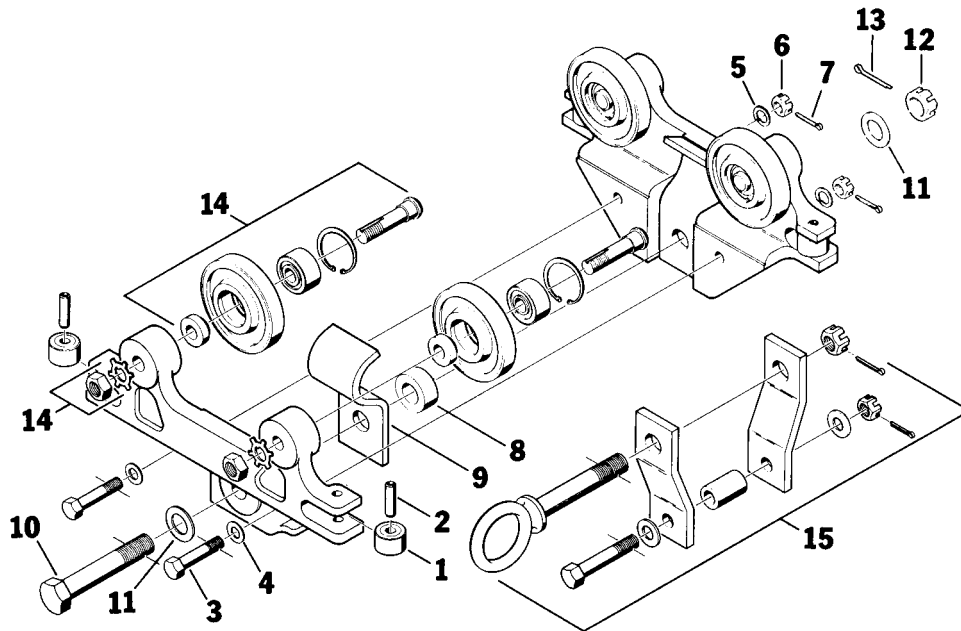
**BT-325-10, BT-333-10, BT-325-10R, BT-333-10R**  
**BT-325-10-DHS, BT-333-10-DHS, BT-325-10R-DHS, BT-333-10R-DHS**

REF.	STOCK CODE	DESCRIPTION	QUANTITY
1	15033	3044 1.625" Guide Roller	4
2	54210	7/16" x 2" Spring Pin	4
3	51020	5/8" Hex Bolt	2
4	53070	5/8" Washer	2
5	53240	5/8" Lockwasher	2
6	52290	5/8" Slotted Hex Nut	2
7	54050	1/8" Cotter Pin	2
8	55610	Spacer	1
9	61110	Safety Strap	2
10	51550	1" Hex Bolt	1
11	53100	1-1/8" Washer	2
12	52400	1" Slotted Hex Nut	1
13	54070	1/8" Cotter Pin	1
14	30300	3046 Flat Wheel Sub-Assembly	4
		4.8" Flat Wheel	4
		Snap Ring	4
		Wheel Bearing	4
		Stud	4
		Spacer	4
		3/4" Star Lockwasher	4
		3/4" Hex Nut	4
15**	15110	DHS-5012-1 Hanger Strap Sub-Assembly	1
		1" Eyebolt	1
		1" Slotted Hex Nut	1
		1/8" Cotter Pin	1
		Spacer	1
		Hanger Strap	2
		3/4" Hex Bolt	1
		3/4" Slotted Hex Nut	1
		1/8" Cotter Pin	1
		3/4" Washer	1

\*\* For DHS Option Only

**BT-325-10, BT-333-10, BT-325-10R, BT-333-10R**  
**BT-325-10-DHS, BT-333-10-DHS, BT-325-10R-DHS, BT-333-10R-DHS OPTIONS**  
 (See Pages 28-29 for Optional Wheels)

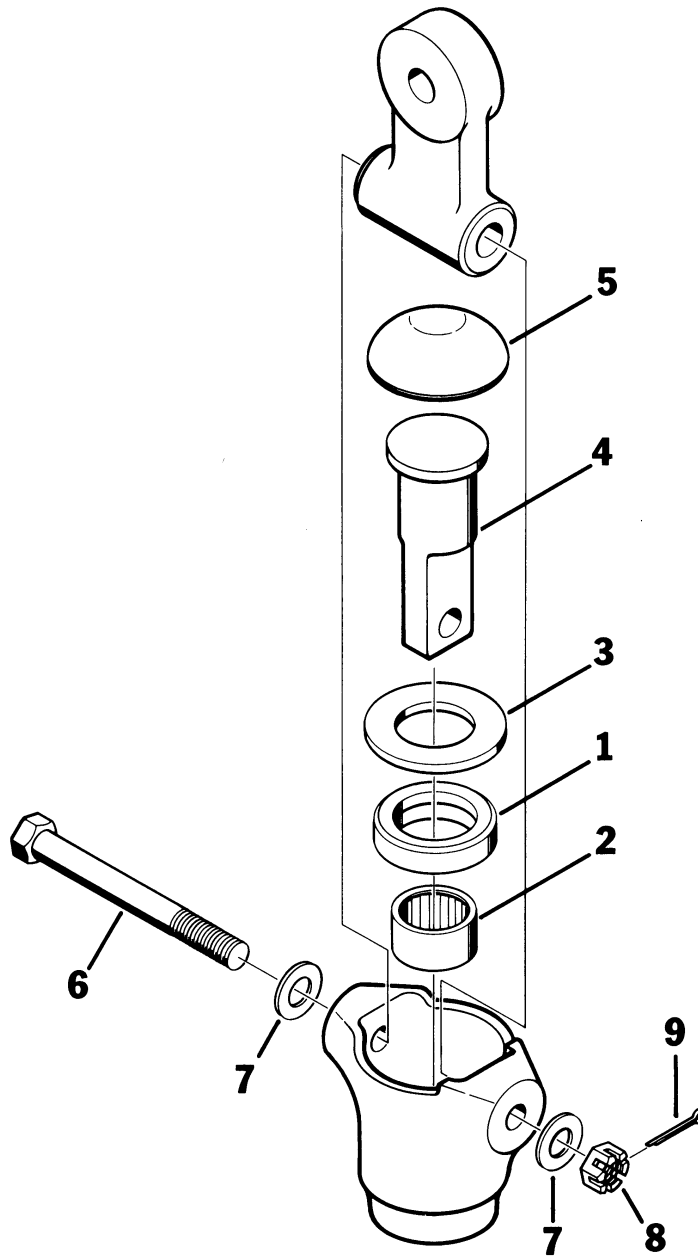
STOCK CODE		DESCRIPTION
30320	3047	4.8" Contour Wheel Assembly
30390	3051	4.8" Bronze Flanged Wheel Assembly
30440	3023	6" Flat Conveyor Wheel Assembly
30450	3024	6" Contour Conveyor Wheel Assembly



**UNIVERSAL SWIVEL  
S-300**

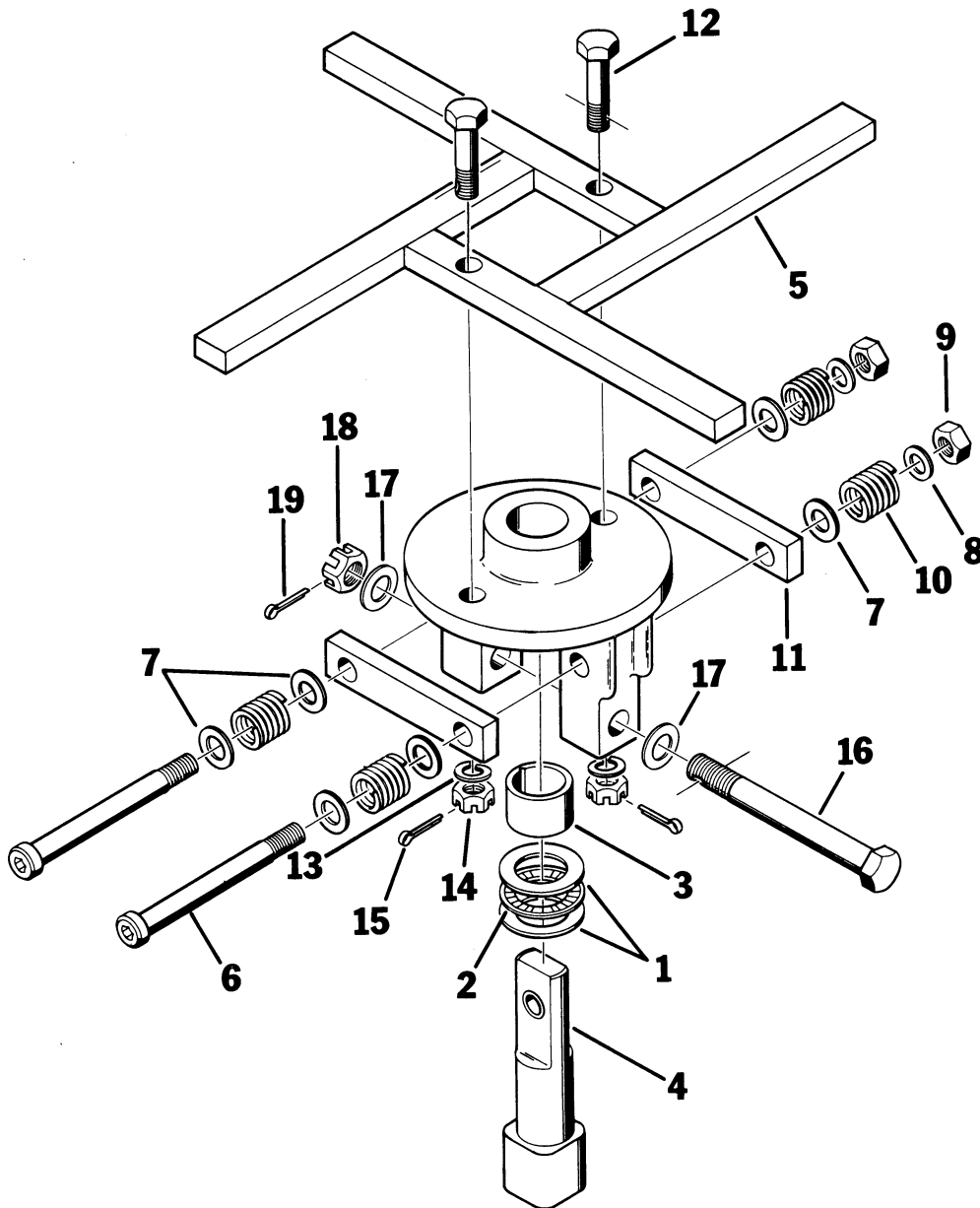
REF.	STOCK CODE	DESCRIPTION	QUANTITY
1	56010	Thrust Bearing	1
2	56050	Roller Bearing	1
3	53110	1-1/2" Washer	1
4	54280	Detent 9 Swivel Pin	1
5	78470	Welsh Plug	1
6	51130	5/8" Hex Bolt	1
7	53070	5/8" Washer	2
8	52290	5/8" Slotted Hex Nut	1
9	54050	1/8" Cotter Pin	1

**NOTE:** Sold separately or as an Option on the TS-325 Trolley

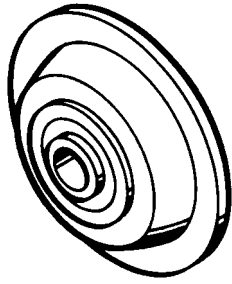


5060-1 INDEXING TURN STILE

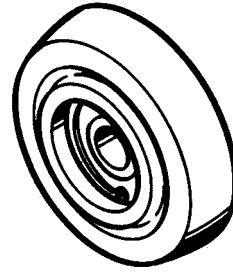
REF.	STOCK CODE	DESCRIPTION	QUANTITY
1	56030	Thrust Washer	2
2	56020	Thrust Bearing	1
3	64100	Bronze Bushing	1
4	54220	#2 Detent Pin	1
5	77010	Detent Turn Stile (Specify description)	1
6	50860	1/2" Shoulder Screw	2
7	53060	1/2" Washer	6
8	53130	3/8" Washer	2
9	52090	3/8" Lock Nut	2
10	76040	Die Spring	4
11	75010	Bronze Detent Pads	2
12	50780	1/2" Hex Bolt	2
13	53230	1/2" Lockwasher	2
14	52220	1/2" Slotted Hex Nut	2
15	54040	1/8" Cotter Pin	2
16	51130	5/8" Hex Bolt	1
17	53070	5/8" Washer	2
18	52290	5/8" Slotted Hex Nut	1
19	54050	1/8" Cotter Pin	1



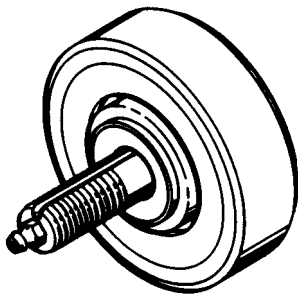
**OPTIONAL WHEEL ASSEMBLIES**



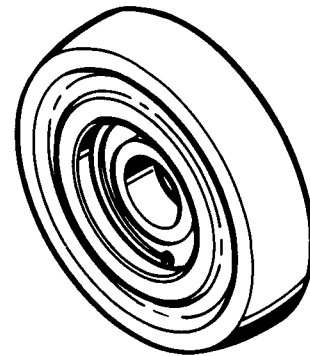
**2" DIA. FLANGED WHEEL**  
3039 - Contour (Shown) (30020)



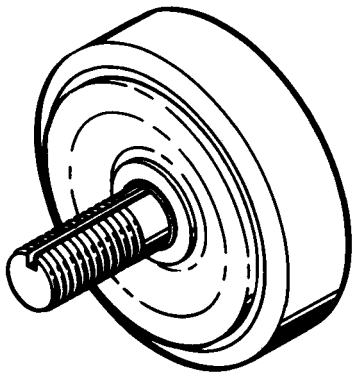
**2.4" DIA. WHEEL**  
3053 - Contour (Shown) (30050)



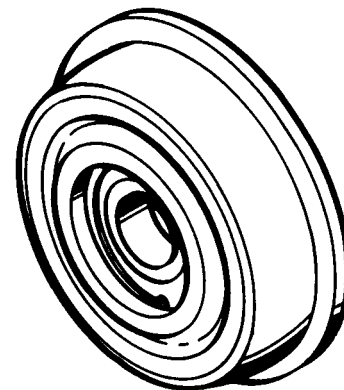
**3" DIA. CONVEYOR WHEEL**  
3013 - Flat (Shown) (30400)  
3016 - Contour (30410)



**3.2" DIA. WHEEL**  
3050 - Contour (Shown) (30110)

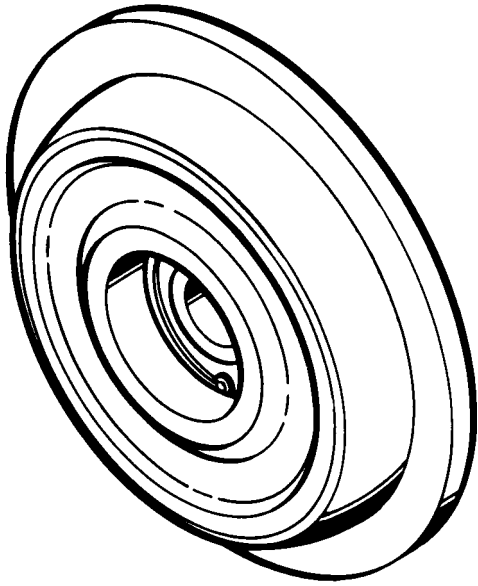


**4" DIA. CONVEYOR WHEEL**  
3017 - Flat (Shown) (30420)  
3018 - Contour (30430)

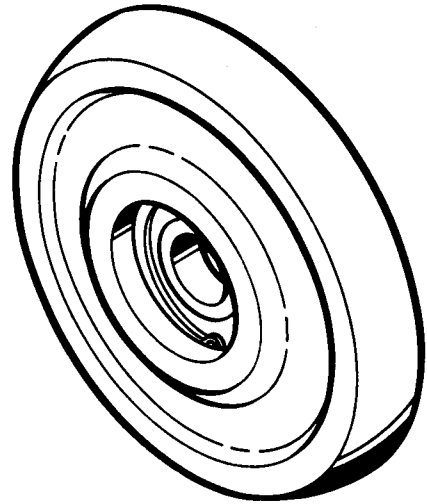


**BRONZE**  
**3.2" DIA. FLANGED WHEEL**  
3065 - Flat or Contour Bronze (30370)

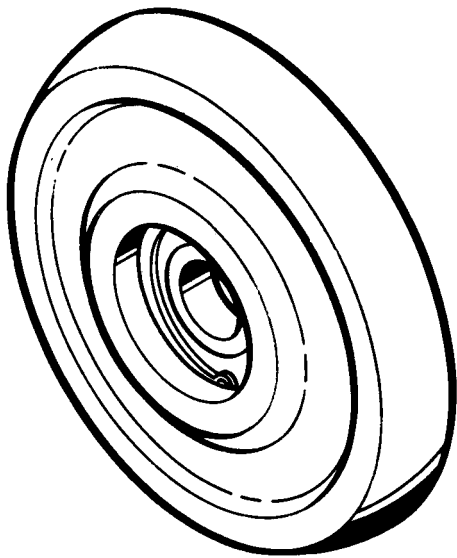
OPTIONAL WHEEL ASSEMBLIES



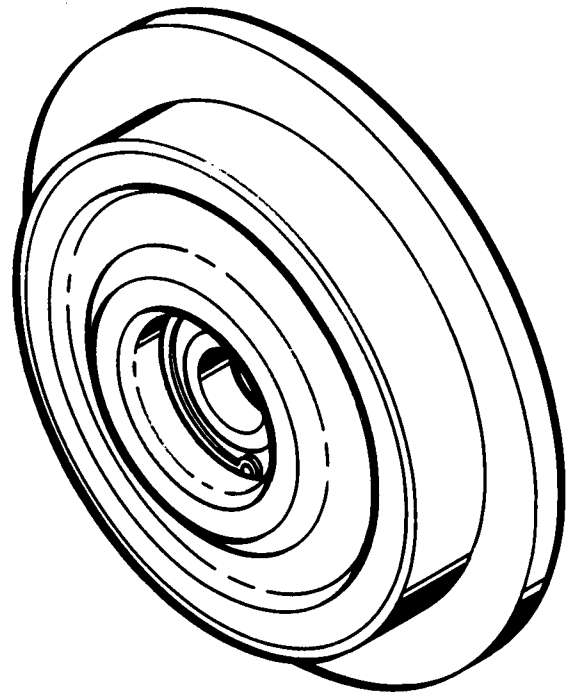
**BRONZE**  
**4.5" DIA. FLANGED WHEEL**  
3054 - Flat or Contour / Bronze (30380)



**4.62" DIA. WHEEL**  
3029 - Contour (Shown) (30270)  
Single Bearing  
3011 - Flat (30250)  
3005 - Flat / Double Bearing (30290)  
3038 - Contour / Double Bearing (30240)

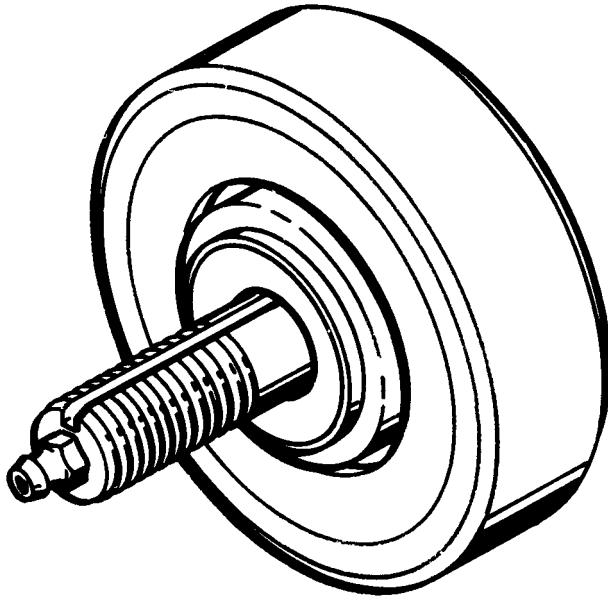


**4.8" DIA. WHEEL**  
3047 - Contour (Shown) (30320)  
3046 - Flat (30300)

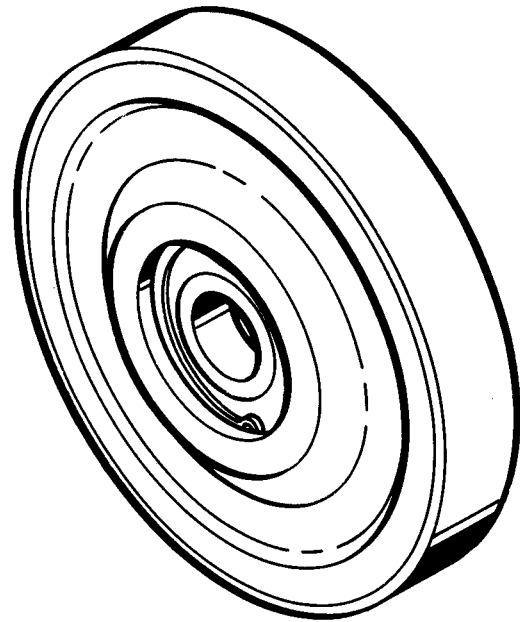


**BRONZE**  
**4.8" DIA. FLANGED WHEEL**  
3061 - Flat (Shown) or Contour Bronze  
(30390)

OPTIONAL WHEEL ASSEMBLIES



**6" DIA. CONVEYOR WHEEL**  
3023 - Flat (Shown) (30440)  
3024 - Contour (30450)



**5.6" DIA. WHEEL**  
3008 - Flat (Shown) (30350)  
Double Bearing  
3058 - Contour (30360)  
Double Bearing